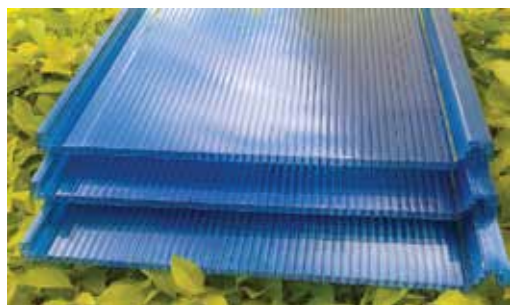
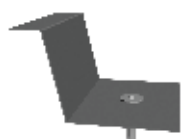


Materiais Necessários para Montagem da Telha de Policarbonato Click



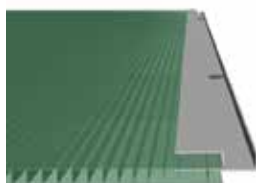
Telha de Policarbonato Click



Garra de Inox e Parafuso



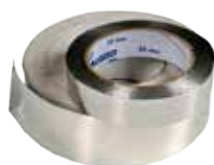
Tampa Click em Policarbonato



Perfil U arremate 6 mm em alumínio



Fita Porosa

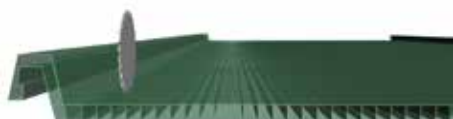


Fita em Alumínio



Silicone Neutro

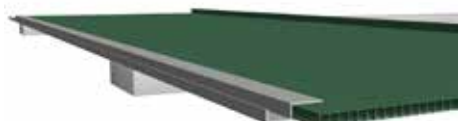
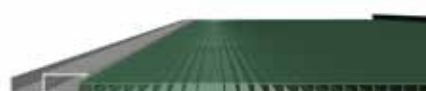
Montagem da Telha Click



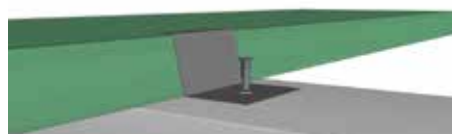
1. Refile e retire as pontas da primeira e da última chapa de policarbonato



2. Encaixe o Perfil U Arremate



3. Fixar o parafuso no Perfil arremate na terço de apoio



4. Encaixe as garras na Telha Click e fixe na terço de apoio



5. Encaixe as Telhas



6. Aplique a fita porosa na parte inferior e a metálica parte superior da chapa



7. Encaixe e refile a tampa nas pontas para melhor acabamento

